



5401 Route 42

Turnersville, New Jersey 08012

Property Description

A freestanding 27,200± square-foot retail building situated on 4.2± AC is available for sale or lease. The property features a 4,200± SF mezzanine, and is located on highly-traveled Route 42 (Black Horse Pike), in Turnersville's thriving commercial district.

Building Size:	23,000± SF plus 4,200± SF Mezzanine
Lot Size:	4.2± AC
Frontage:	252' on Route 42 (Black Horse Pike)
Utilities:	Public
Parking:	82± vehicle spaces
Traffic Count:	51,300± VPD
Block/Lot:	111/5.03
Taxes:	\$61,169 (2014)
Zoning:	Highway Commercial
Misc:	New roof Wet overhead sprinkler system

Demographics	3 mi	5 mi	10 mi
Population	66,734	174,789	529,156
Households	23,016	64,127	197,805
Med. Household Income	\$83,291	\$71,211	\$70,275

Asking Price:

\$2,795,000

Lease Rate:

\$10.00/SF NNN

For more information:

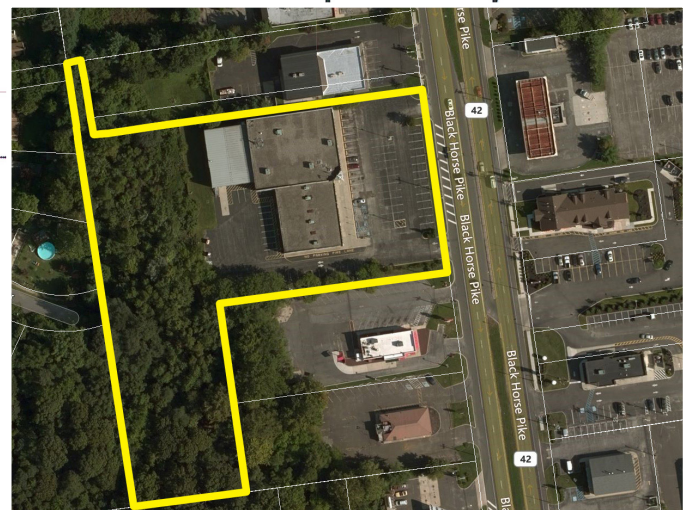
Rick Gordon

+1 215 801 8491 • rick.gordon@naimertz.com

Marc Cutler

+1 856 234 9600 • marc.cutler@naimertz.com





For more information:

Rick Gordon

+1 215 801 8491 • rick.gordon@naimertz.com

Marc Cutler

+1 856 234 9600 • marc.cutler@naimertz.com

NO WARRANTY OR REPRESENTATION, EXPRESS OR IMPLIED, IS MADE AS TO THE ACCURACY OF THE INFORMATION CONTAINED HEREIN, AND THE SAME IS SUBMITTED SUBJECT TO ERRORS, OMISSIONS, CHANGE OF PRICE, RENTAL OR OTHER CONDITIONS, PRIOR SALE, LEASE OR FINANCING, OR WITHDRAWAL WITHOUT NOTICE, AND OF ANY SPECIAL LISTING CONDITIONS IMPOSED BY OUR PRINCIPALS NO WARRANTIES OR REPRESENTATIONS ARE MADE AS TO THE CONDITION OF THE PROPERTY OR ANY HAZARDS CONTAINED THEREIN ARE ANY TO BE IMPLIED.

21 Roland Avenue
Mount Laurel, NJ 08054

+1 856 234 9600

naimertz.com